



RALPH DIGUISEPPE, CHAIRMAN
BRYAN SERVIS
WILLIAM M. PEZZA
JAMES PROKOPIAK, ESQ.
JOHN CORDISCO, ESQ.

REDEVELOPMENT AUTHORITY

of the County of Bucks
216 Pond Street, Bristol, PA 19007
215-781-8711 FAX 781-8716

JEFFREY D. DARWAK
EXECUTIVE DIRECTOR

SEAN KILKENNY, ESQUIRE
SOLICITOR

MEMORANDUM

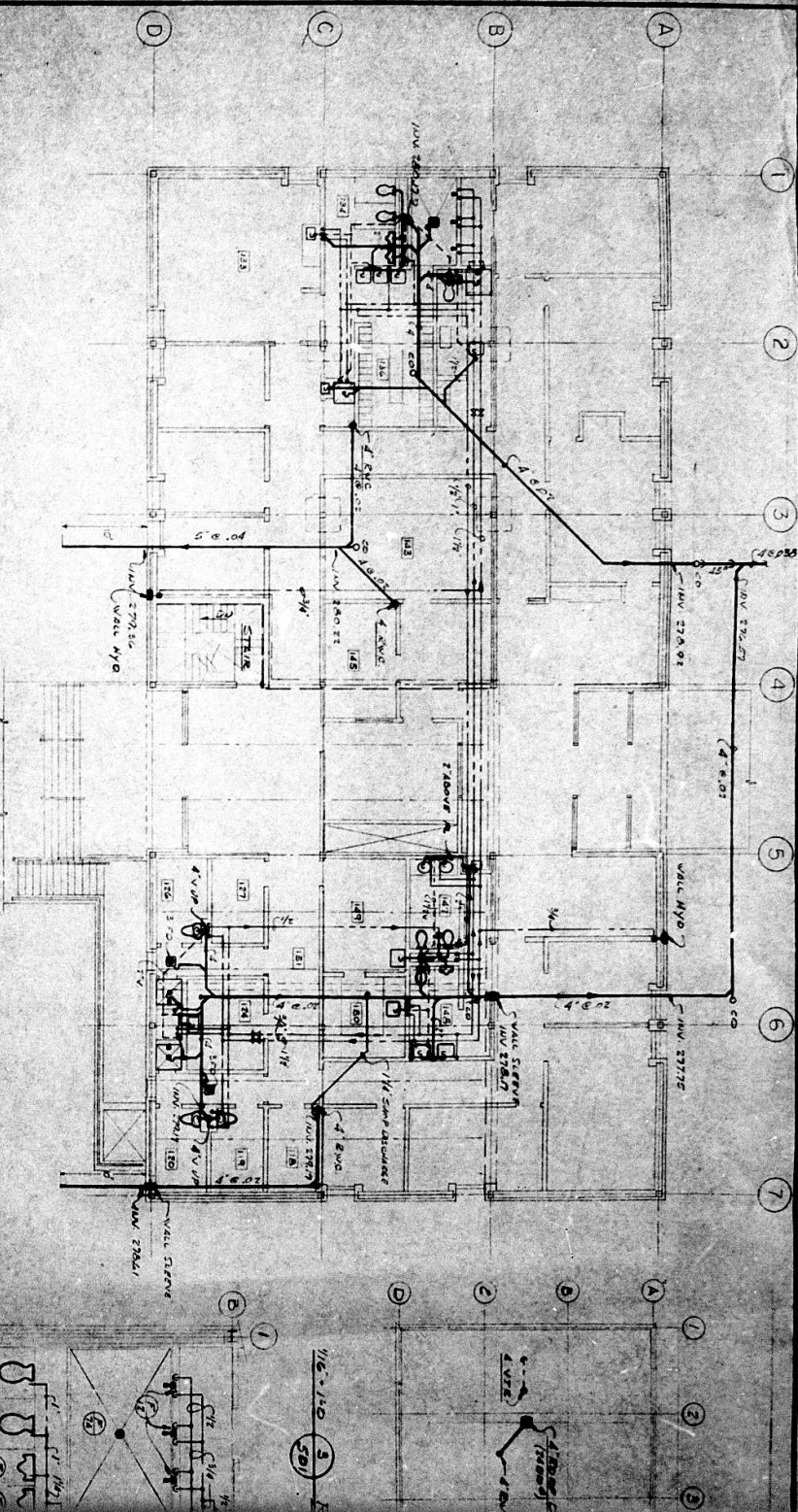
Date: November 8, 2024

To: All interested parties

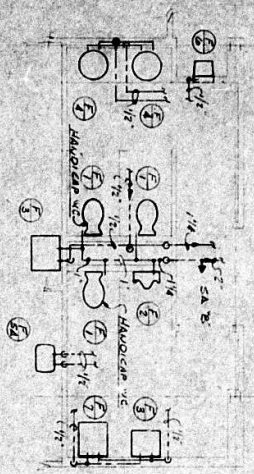
From: Jeffrey Darwak, Executive Director

Re: Request for Expressions of Interest for:
RETIRED AND VACANT TOWNSHIP POLICE BUILDING
50 Township Road
Northampton Township, Bucks County, Pennsylvania

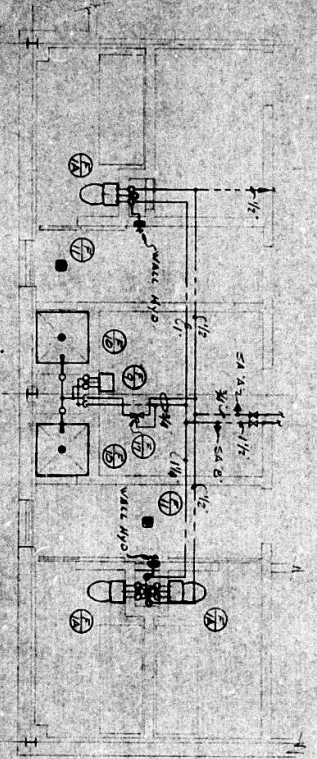
-
- 1) Please be advised that the deadline to submit proposals has been extended to 12:00 P.M., December 13, 2024.
 - 2) A copy of available floor plans is attached hereto.



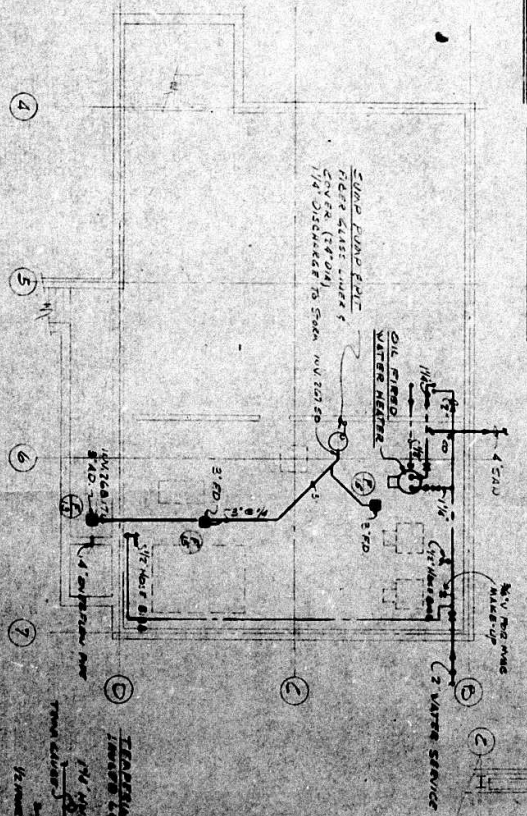
8'-1'-0" **1** GROUND FLOOR PLAN *FIG. FL. ELEV. 281.50*



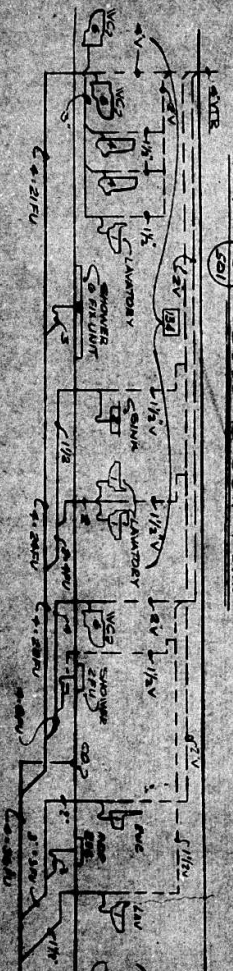
11'-11'-0" **4** PUBLIC TOILET PLAN



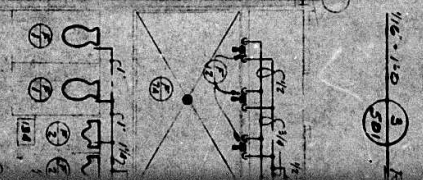
11'-11'-0" **5** CELL BLOCK PLAN



11'-11'-0" **2** ASSESSMENT PLAN *FIG. 110-110*



11'-11'-0" **5** CELL BLOCK PLAN

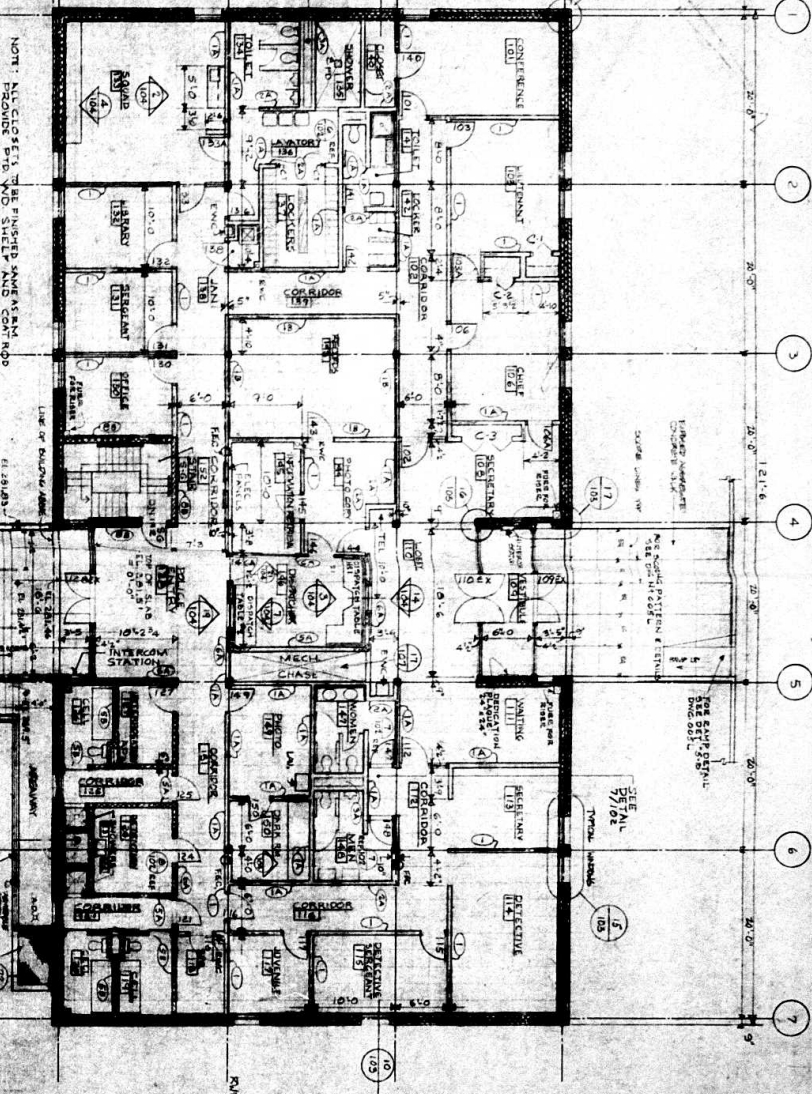
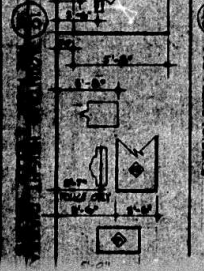
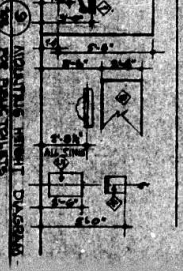
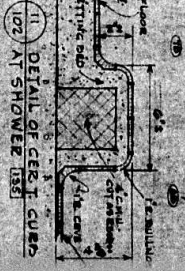
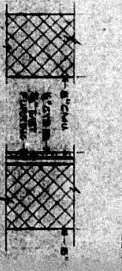
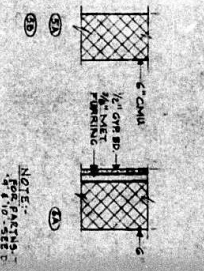
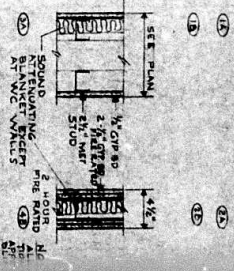
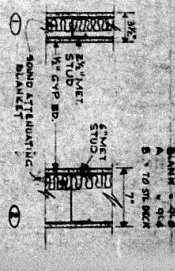


11'-11'-0" **3**



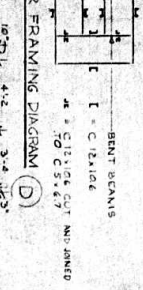
11'-11'-0" **6**

PARTITION TYPES

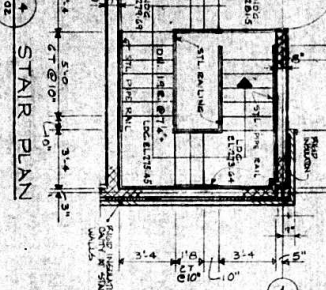


GROUND FLOOR PLAN

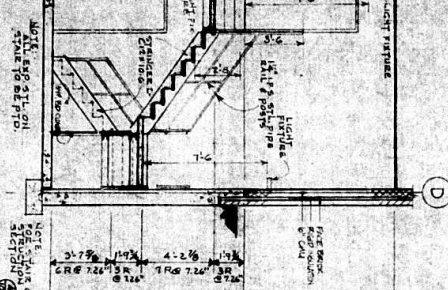
NOTE: UNLESS OTHERWISE SPECIFIED, ALL PARTITIONS ARE TO BE 1/2\"/>



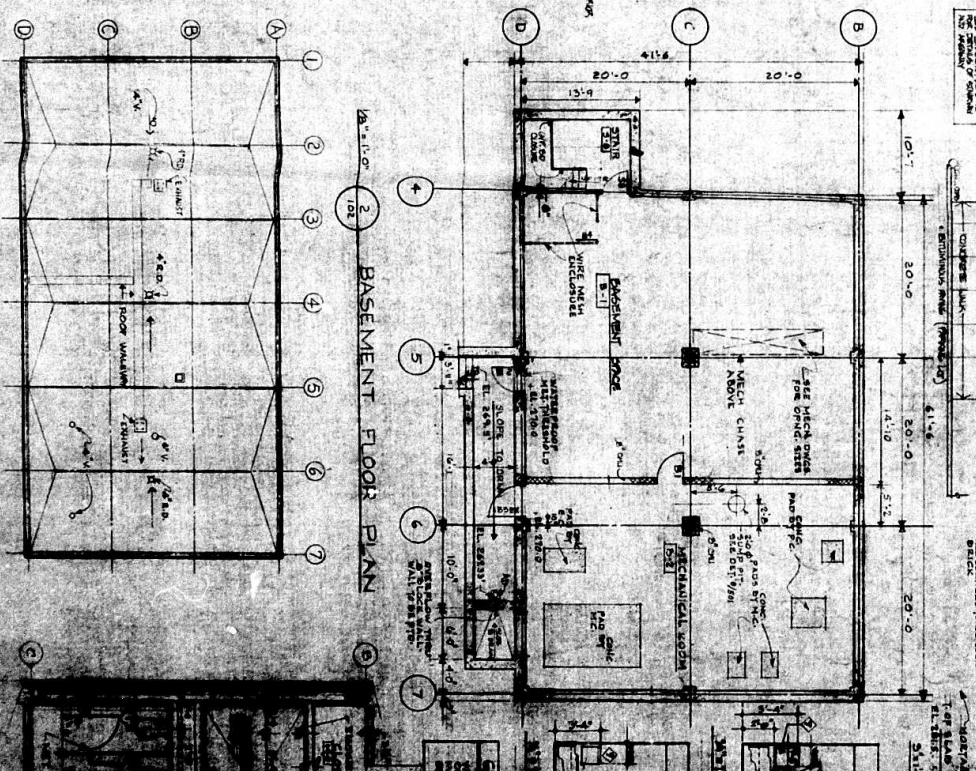
STAIR FRAMING DIAGRAM



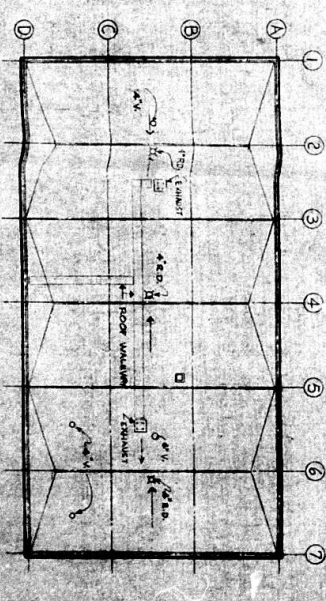
STAIR PLAN



STAIR SECTION



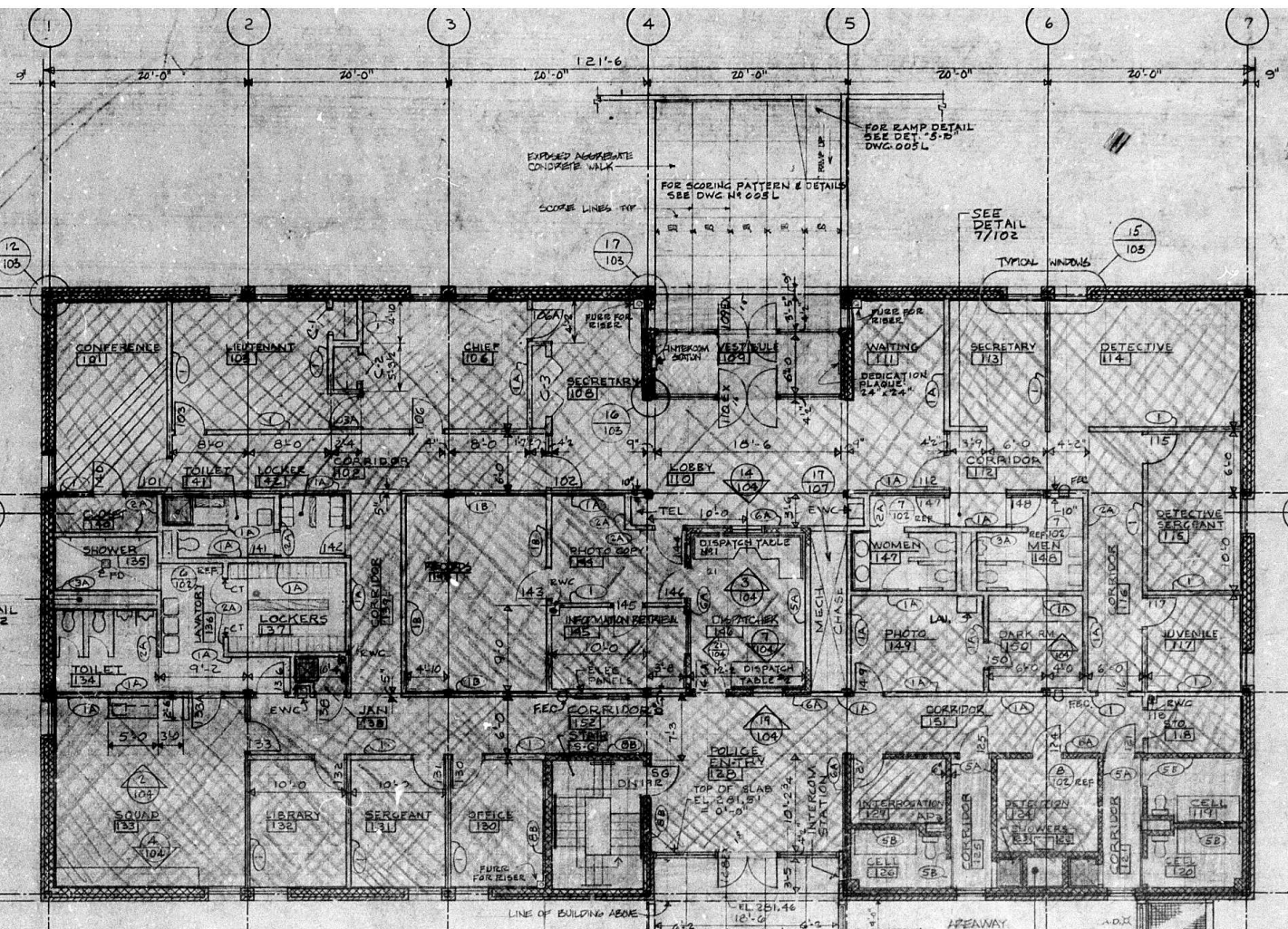
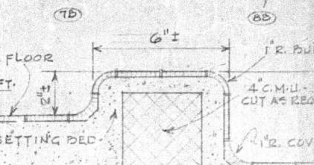
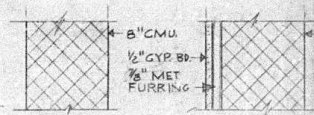
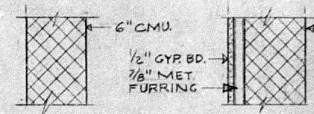
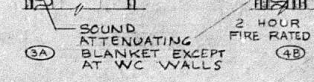
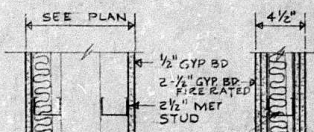
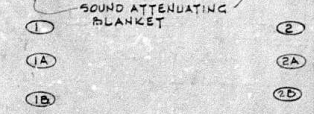
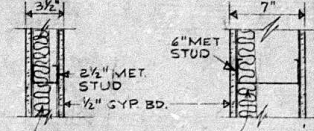
BASEMENT FLOOR PLAN



ROOF PLAN

PARTITION TYPES

TYPE NUMBER PARTITION HT.
 BLANK = 9'-0"
 A = 9'-4"
 B = TO STL. DECK



NOTE: ALL CLOSETS TO BE FINISHED SAME AS RM. PROVIDE PTD. WD. SHELF AND COAT ROD E.E.C.'S MTD. 4'-0" H. TO E.

GROUND FLOOR PLAN

1 102

102

102

102

102

102

102

102

102

102

102

102

102

102

102

102

102

102

102

102

102

102

102

102

102

102

102

102

102

102

102

102

102

102

102

102

102

102

102

102

102

102

102

102

102

102

102

102

102

102

102

102

102

102

102

102

102

102

102

102

102

102

102

102

102

102

102

102

102

102

102

102

102

102

102

102

102

102

102

102

102

102

102

102

102

102

102

102

102

102

102

102

102

102

102

102

102

102

102

102

102

102

102

102

102

102

102

102

102

102

102

102

102

102

102

102

102

102

102

102

102

102

102

102

102

102

102

102

102

102

102

102

102

102

102

102

102

102

102

102

102

102

102

102

102

102

102

102

102

102

102

102

102

102

102

102

102

102

102

102

102

102

102

102

102

102

102

102

102

102

102

102

102

102

102

102

102

102

102

102

102

102

102

102

102

102

102

102

102

102

102

102

102

102

102

102

102

102

102

102

102

102

102

102

102

102

102

102

102

102

102

102

102

102

102

102

102

102

102

102

102

102

102

102

102

102

102

102

102

102

102

102

102

102

102

102

102

102

102

102

102

102

102

102

102

102

102

102

102

102

102

102

102

102

102

102

102

102

102

102

102

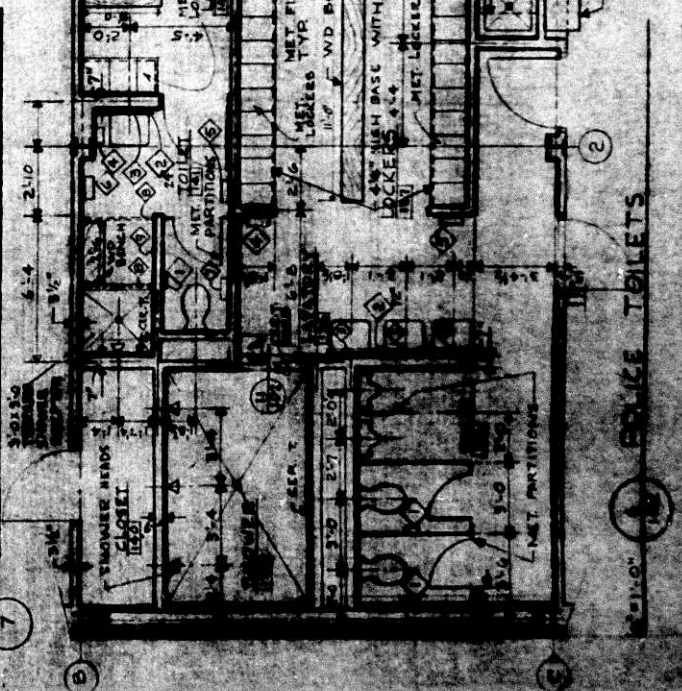
102

102

102

102

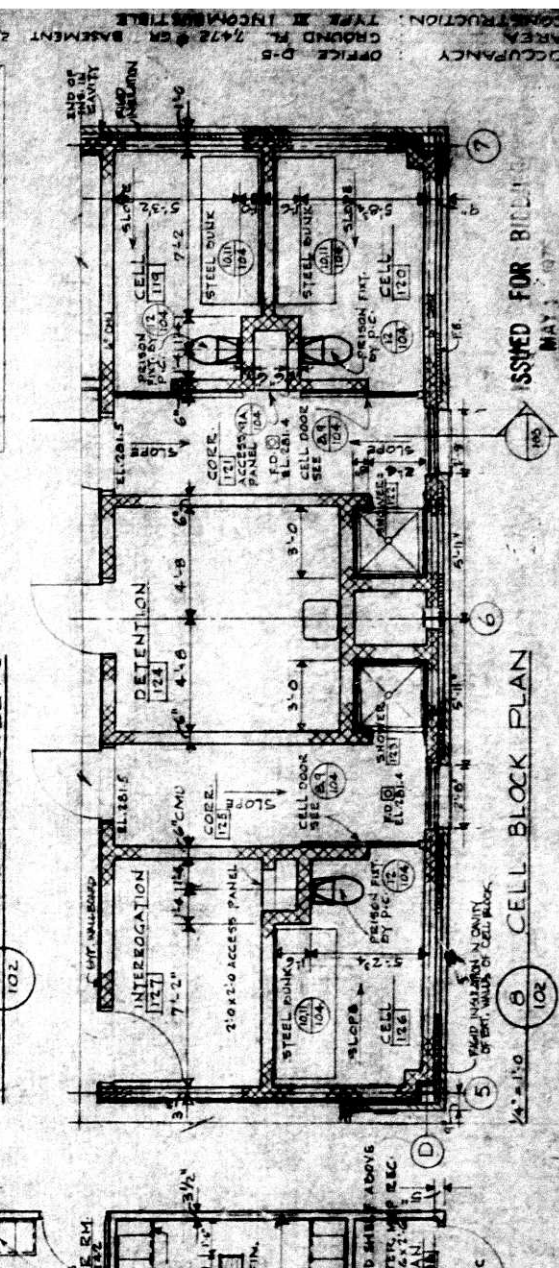
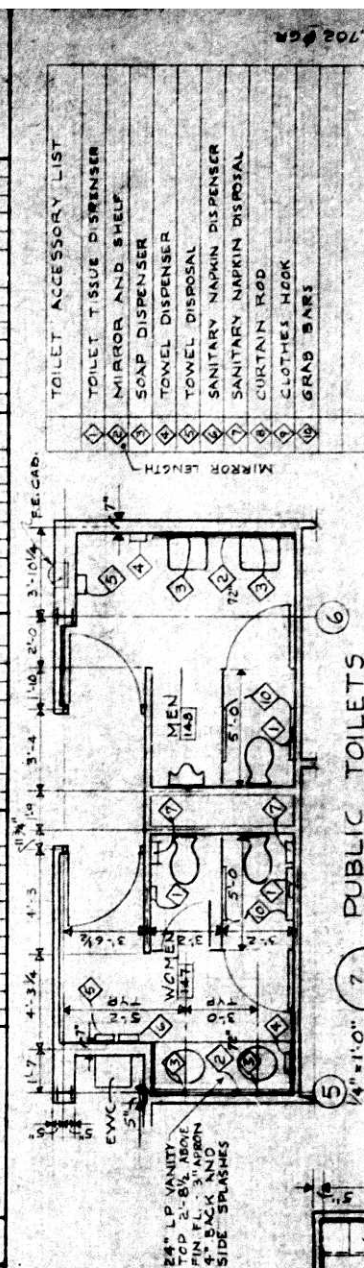
102

[illegible]

NOTE:- BASIC WALL PAINT COLOR "P.1"

		BASEMENT										BASEMENT										BASEMENT									
		1	2	3	4	5	6	7	8	9	10	1	2	3	4	5	6	7	8	9	10	1	2	3	4	5	6	7	8	9	10
B1	BASEMENT																														
B2	MECHANICAL																														

BASEMENT



① POLICE TOILETS

CELL BLOCK PLAN

ISSUED FOR F

ISSUED FOR BIDDING

ISSUED FOR F